

# MOTORSCHUTZBÜGEL ULTIMATE

Crash bar | Arceau de sécurité | Barra de choque | Barra d'urto

Art.-Nr. 13201-000



**Original Schraube entfällt!**  
Original screw omitted!  
Vis d'origine omise!



#	Bauteil component composant	DE Die Farben der Abbildungen dienen nur der Veranschaulichung. EN The colors are for illustrating purposes only. FR Les couleurs utilisées sont à titre indicatif seulement.	DIN	ISO	Menge quantity quantité
1	Zylinderschraube / Cylinder head screw	M8x50 (Torx)	912Z	4762	2
2	Zylinderschraube / Cylinder head screw	M8x55 (Torx)	912Z	4762	2
3	Zylinderschraube / Cylinder head screw	M8x60 (Torx)	912Z	4762	2
4	Alu-Distanzhülse (schwarz eloxiert) / Alu sleeve (black anodized) ØD 22,0 - Ød 10,5 - h 25,0 mm				4
5	Alu-Distanzhülse (schwarz eloxiert) / Alu sleeve (black anodized) ØD 22,0 - Ød 10,5 - h 35,0 mm				2
6	U-Scheibe / Washer	M8	9021A2	7093	6
7	Rechter Gummi Puffer / Rubber pad right side				1
8	Linker Gummi Puffer / Rubber pad left side				1
9	Rechter & linker Schutzbügel / Crash bar right & left side				2
10	Schraubensicherung / Thread locking fluid				1

## LEGENDE/KEY/FILE LEGENDE

**Anbau Tipp**  
Fitting tip  
Astuce de montage

**Achtung**  
Attention  
Attention

**Vergrößerung**  
Magnification  
Grossissement

**Montagepaste**  
Fitting lubricant  
Lubrifiant de montage

**Schraube**  
Screw  
Vis

**Schraubensicherung**  
Thread locking fluid  
Freiniflets

**Drehmoment**  
Torque  
Torque

**Reiniger**  
Cleaner  
Nettoyant





**LINKS/LEFT**

ØD 22,0 - Ød 10,5 - h 25,0 mm

4

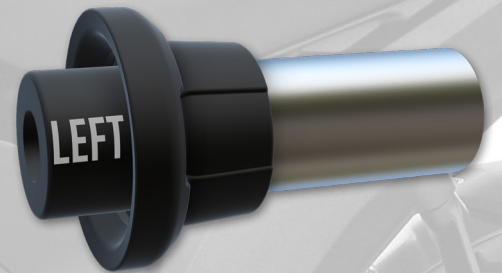
6



**M8x50**  
24Nm



1



ØD 22,0 - Ød 10,5 - h 25,0 mm

4

6



**M8x55**  
24Nm

2

ØD 22,0 - Ød 10,5 - h 25,0 mm

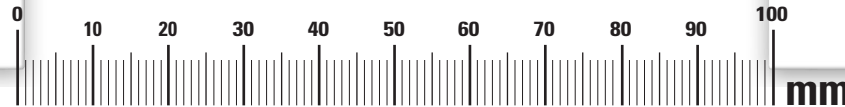
4

6



**M8x55**  
24Nm

2





RECHTS/RIGHT

